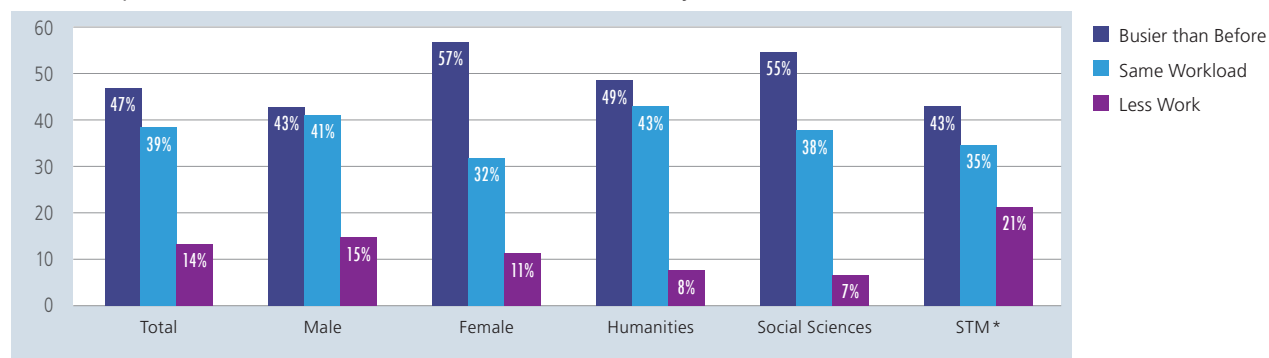


## EXPLORING THE EFFECTS OF COVID-19 ON SCHOLARLY AUTHORS

In May of 2020, De Gruyter conducted a survey that explored the professional and personal effects of the COVID-19 pandemic on academic authors. A total of 3,214 academic journal and book authors in more than 100 countries completed the survey.

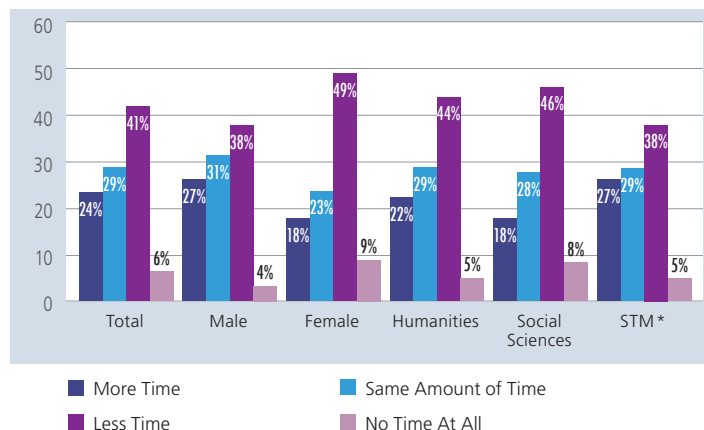
Findings reveal that scholars have experienced an increase in their workload since the pandemic began. When asked to “describe the impact of the coronavirus crisis on your work,” 47 percent of respondents reported that they were “busier than before” the COVID-19 pandemic began.

Impact of COVID-19 on the Work of Academic Authors, by Gender and Field, in Percent

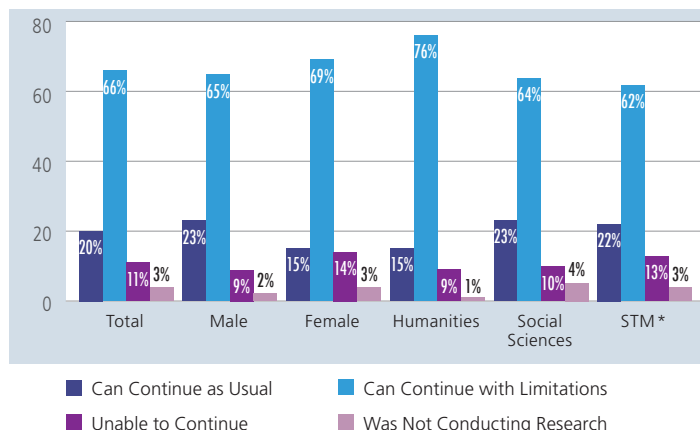


Many respondents also indicated that they have had less time to write and have continued their research with limitations during the COVID-19 outbreak. The charts below illustrate these findings.

Have You Had Time to Write? Responses from Authors, by Gender and Field, in Percent



Have You Been Able to Continue Researching? Responses from Authors, by Gender and Field, in Percent



Teaching online was most frequently reported as a barrier to writing (68 percent) and research (56 percent) by the authors included in the survey. Additional pandemic-related challenges to scholarly writing and research are outlined in the tables below.

FACTORS AFFECTING WRITING TIME \*\*

	Total	Female	Male	STM*	Social Sciences	Humanities
Too Busy with Teaching Online	68%	69%	70%	67%	74%	65%
Supervising Students, Others Digitally Takes Time	59%	64%	56%	56%	66%	59%
Caring for Family, Children/Homeschooling	53%	56%	51%	50%	55%	56%
Stressed/Cannot Concentrate	30%	35%	27%	28%	33%	33%
Suffer from Lack of Daily Routine	26%	24%	27%	27%	23%	27%
Trying to Stay in Contact with Fellow Researchers Digitally	24%	27%	22%	23%	27%	24%

LIMITATIONS TO CONDUCTING RESEARCH \*\*

	Total	Female	Male	STM*	Social Sciences	Humanities
Teaching/Organizing Online Teaching	56%	64%	53%	52%	65%	58%
No/Limited Access to Research of Others	47%	48%	45%	23%	49%	75%
Caring for Family/ Relatives/Friends	35%	41%	33%	34%	41%	35%
Difficulty Communicating with Collaborators	29%	26%	30%	40%	28%	17%
Lack of Access to Lab	23%	19%	27%	49%	9%	5%

\* STM includes the areas of science, technology, and medicine.

\*\* Respondents could give multiple responses.

A second version of this survey was disseminated in October of 2020. A limited amount of data from the October survey was released in this report: [https://blog.degruyter.com/wp-content/uploads/2020/12/Locked-Down-Burned-Out-Publishing-in-a-pandemic\\_Dec-2020.pdf](https://blog.degruyter.com/wp-content/uploads/2020/12/Locked-Down-Burned-Out-Publishing-in-a-pandemic_Dec-2020.pdf).

Source: Walter de Gruyter GmbH, Author Pulse Survey Coronavirus Crisis, Market Research Findings, May 2020. View additional survey findings here: <https://blog.degruyter.com/wp-content/uploads/2020/06/De-Gruyter-Author-pulse-survey-results.pdf>.